

Health & Safety

DRIVING

VITAL STATS

Health & Safety

▶ DID YOU KNOW?

• More than 94 percent of the 11 million vehicles involved in motor vehicle crashes in 2005 were passenger cars or light trucks.

• Large trucks accounted for 8 percent of the vehicles in fatal crashes, but only 3 percent of the vehicles involved in injury crashes and 5 percent of the vehicles involved in property-damage-only crashes. Of the 4,932 large trucks involved in fatal crashes, 74 percent were combination trucks.

• Fires occurred in 0.1 percent of the vehicles involved in all traffic crashes in 2005. For fatal crashes, however, fires occurred in 3 percent of the vehicles involved.

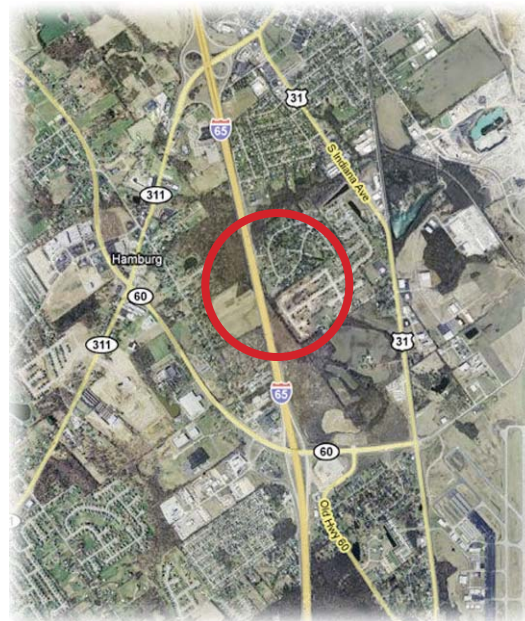
• Regardless of crash severity, the majority of vehicles in single- and two-vehicle crashes were going straight prior to the crash. The next most common vehicle maneuver differed by crash severity: negotiating a curve for fatal crashes, turning left for injury crashes, and stopped in traffic lane for property-damage-only crashes.

• The pedestrian fatality rate per 100,000 population was 1.65 for the nation. Florida had the highest rate (3.24) and New Hampshire had the lowest (0.38).

SOURCE: National Highway Transportation Safety Authority - National Center for Statistics and Analysis

ACCIDENT-PRONE AREAS IN 2007

The purpose of the recently created Highway Safety Improvement Program is to reduce traffic fatalities and serious injuries on public roads. As part of the new program, states are required to submit an annual report describing not less than 5 percent of their highway locations exhibiting the most severe safety needs. Below are the Floyd and Clark county listings.

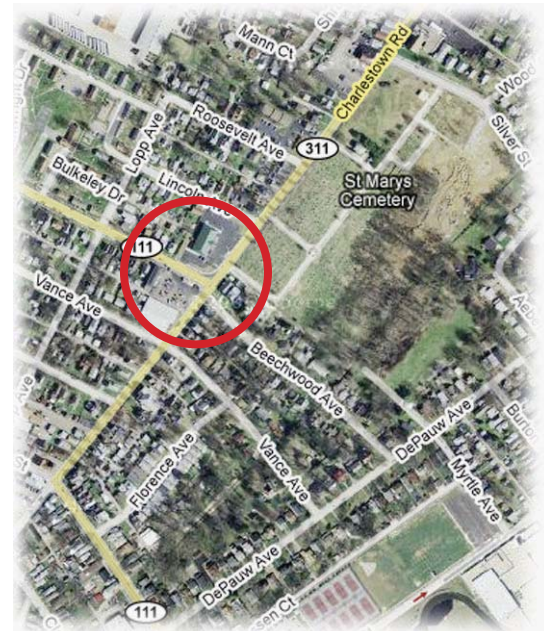


○ ROAD SEGMENT: Interstate 65 from .2 to .4 mile north of Ind. 60

- 3 incapacitating injury crashes
- 60 non-incapacitating injury crashes
- 243 property damage only crashes
- 63 fatal or injury crashes

▶ INTERSECTION: Ind. 62 at Decker Lane, 4.2 miles northeast of Ind. 3 near Charlestown

- 2 fatalities
- 10 non-incapacitating injury crashes
- 17 property damage only crashes
- 12 fatal or injury crashes



○ INTERSECTION: Ind. 111 at Beechwood Avenue at Charlestown Road, 2.5 miles south of Interstate 265

- 2 incapacitating injury crashes
- 12 non-incapacitating injury crashes
- 34 property damage only crashes
- 14 fatal or injury crashes

▶ INTERSECTION: Ind. 111 (Vincennes St.) at Spring Street 1.5 miles northeast of I-164

- 0 fatalities
- 2 incapacitating
- 16 non-incapacitating
- 34 property damage only crashes
- 18 fatal or injury crashes

▶ COUNTING FATAL ACCIDENTS IN OUR COUNTIES COMPARED TO OTHER AREAS

	1994	1995	1996	1997	1998	1999	2000	2001	2002	2003	2004	2005	2006	DIFFERENCE '94-'06
Clark County	10	16	6	10	12	13	18	10	9	3	13	11	15	+50%
Floyd County	11	7	9	3	7	3	7	5	14	6	9	11	8	-27.27%
INDIANA	971	960	984	935	982	1,020	886	909	792	833	947	938	899	-7.42%
U.S.	40,716	41,817	42,065	42,013	41,501	41,717	41,945	42,196	43,005	42,884	42,836	43,510	42,642	+4.73%

SOURCE: National Highway Transportation Safety Authority - National Center for Statistics and Analysis

AREA BIRTH TRENDS

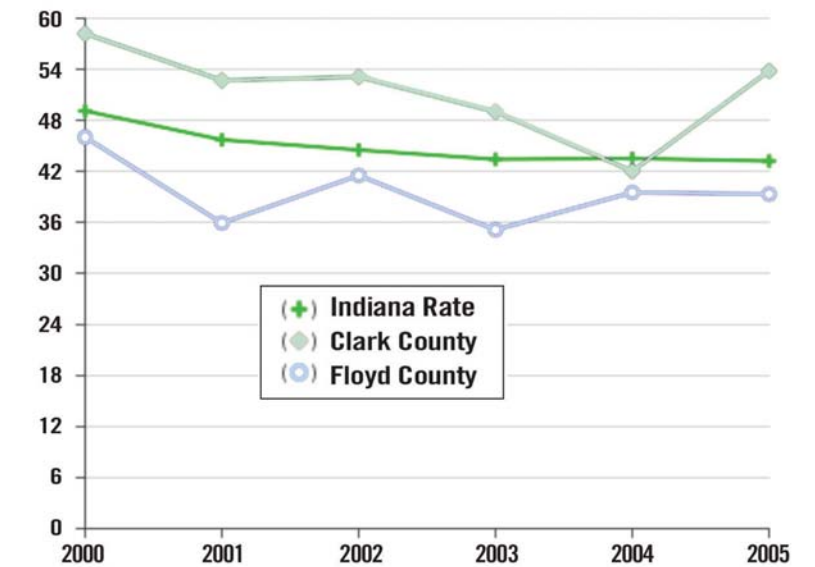
▶ CLARK COUNTY

	2000	2005
Percentage of Low Birthweight Babies	6.8%	8.2%
Percentage of Mothers who Reported Smoking During Pregnancy	22.1%	20.2%
Percentage of Mothers who Received First Trimester Prenatal Care	81.4%	78.6%
Nonmarital Births as a Percentage of All Births	35.1%	40.8%
Teen Birth Rate per 1,000 Females Age 15-17	31.2	27.2

▶ FLOYD COUNTY

	2000	2005
Percentage of Low Birthweight Babies	7.2%	8.8%
Percentage of Mothers who Reported Smoking During Pregnancy	22%	20.1%
Percentage of Mothers who Received 1st Trimester Prenatal Care	85.3%	76.1%
Nonmarital Births as a Percentage of All Births	31.7%	40.6%
Teen Birth Rate per 1,000 Females Age 15-17	21.1	16.4

▶ TEEN BIRTH RATE PER 1,000 FEMALES AGE 15-19 (2000-2005)



SOURCE: Indiana Youth Institute

MARRIAGE BY THE NUMBERS

▶ AGES OF THOSE GETTING MARRIED (2003)

LOCATION	COUPLES	MEAN AGE		MEDIAN AGE	
		BRIDE	GROOM	BRIDE	GROOM
INDIANA	43,461	30.8	33.0	27.0	29.0
Clark County	726	31.1	33.0	28.0	30.0
Floyd County	441	31.4	33.6	27.0	29.5

▶ AGES OF THOSE GETTING MARRIED (2002)

LOCATION	COUPLES	MEAN AGE		MEDIAN AGE	
		BRIDE	GROOM	BRIDE	GROOM
INDIANA	44,952	30.8	32.9	27.0	29.0
Clark County	768	30.8	33.1	27.0	30.0
Floyd County	458	31.5	33.5	28.0	29.0

▶ AGES OF THOSE GETTING MARRIED (2001)

LOCATION	COUPLES	MEAN AGE		MEDIAN AGE	
		BRIDE	GROOM	BRIDE	GROOM
INDIANA	45,794	30.5	32.7	27.0	29.0
Clark County	739	31.2	33.5	27.0	30.0
Floyd County	476	31.0	33.0	27.0	30.0

▶ THE MOST POPULAR MONTH FOR HOOSIERS' MATRIMONY (IN 2003)

	ALL MARRIAGES TOTAL (PERCENT)	CIVIL CEREMONIES	RELIGIOUS CEREMONIES
ALL YEAR	43,461 (100%)	32.2%	67.6%
January	1,870 (4.3%)	6.6%	3.2%
February	2,584 (5.9%)	9.4%	4.3%
March	2,603 (6.0%)	7.5%	5.3%
April	2,854 (6.6%)	7.4%	6.2%
May	4,658 (10.7%)	9.1%	11.5%
June	5,538 (12.7%)	9.8%	14.2%
July	4,615 (10.6%)	10.1%	10.9%
August	5,132 (11.8%)	9.6%	12.9%
September	4,293 (9.9%)	8.4%	10.6%
October	4,352 (10%)	9.3%	10.4%
November	2,489 (5.7%)	5.5%	5.9%
December	2,473 (5.7%)	7.5%	4.8%

SOURCE: Indiana State Department of Health, Public Health System Development and Data Commission, Data Analysis Team. Percentages for the individual month of ceremony are column percents, while the 'All Marriages' row is based on total percents. Percentages may not sum to 100% due to rounding.

10.1% GO FIGURE >> While religious matrimony ceremonies took place most often in June, according to Indiana figures for 2003, civil ceremonies took place most often (10.1%) in July.