

# Health & Safety | POLLUTION

## SAFETY - CHEMICALS

Scorecard.com has compiled the facts on the largest polluters in the region. The emissions and exposure information for criteria air pollutants is derived from two U.S. EPA sources: the Air Quality System (AQS) database and the National Emissions Trend (NET) database.

### ► Clark County Total Environmental Releases

Total environmental releases to air, surface water, underground injection and land from the toxic release inventory

RANK - FACILITY	POUNDS
1. Kitchen Kompact, Jeffersonville	244,359
2. Jeffboat L.L.C., Jeffersonville	57,234
3. Haas Cabinet Co. Inc., Sellersburg	22,750
4. Flexcel Borden, Borden	20,050
5. Altec L.L.C., Jeffersonville	10,000
6. Essroc Cement Corp., Speed	1,002
7. Colgate-Palmolive Co., Clarksville	500
8. Pq Corp., 7th St. & Missouri Ave., Jeffersonville	10
9. Chryso Inc., 10600 Hwy. 62 Unit #7, Charlestown	8

### The nation's and Indiana's top

RANK - COUNTY	POUNDS
1. Northwest Arctic, Ak	481,584,142
2. Humboldt, Nv	351,121,741
3. Pinal, Az	251,204,351
4. Salt Lake, Ut	139,708,476
5. Elko, Nv	83,566,543
6. Gila, Az	57,713,118
7. Brazoria, Tx	50,421,721
8. Eureka, Nv	43,657,567
9. Escambia, Fl	38,244,389
10. Juneau, Ak	37,103,243
15. Spencer, In	26,507,023
38. Lake, In	17,134,039
58. Carroll, Ky	11,116,834
59. Jefferson, Ky	11,020,970
61. Gibson, In	10,616,757
90. Warrick, In	7,977,692

RANK - INDIANA COUNTIES	POUNDS
1. Spencer	26,507,023
2. Lake	17,134,039
3. Gibson	10,616,757
4. Warrick	7,977,692
5. Jefferson	5,677,347
6. Vermillion	5,457,208
7. Dearborn	5,050,176
8. Pike	3,986,751
9. Jasper	3,633,528
10. Elkhart	3,619,184
11. Floyd	3,383,472
42. Clark	355,913

### ► Clark County Carbon Monoxide Emissions

RANK - FACILITY	TONS
1. Sellersburg Stone Comp.	31
2. Gohmann Asphalt & Construction Inc.	4
3. Philadelphia Quartz	4
4. George Pfau's Sons Company, Inc.	2
5. Essroc Materials	1
6. Jeffboat	1

### ► What Are the Major Pollutants in Clark County?

Reported Environmental Releases from TRI Sources in 2002

RANK - CHEMICAL NAME	POUNDS
1. Methyl ethyl ketone	117,473
2. Xylene (mixed isomers)	93,402
3. Toluene	44,719
4. N-butyl alcohol	40,714
5. Methanol	39,418

**WHAT IS METHYL ETHYL KETONE?** More hazardous than most chemicals in 7 out of 10 ranking systems. Ranked as one of the most hazardous compounds (worst 10 percent) to ecosystems and human health. This is a high volume chemical with production exceeding 1 million pounds annually in the U.S. It's used in at least 13 industries. Used in consumer products, building materials or furnishings that contribute to indoor air pollution. High production volume chemicals have annual production and/or importation volumes above 1 million pounds.

**What kinds of consumer products may contain this chemical?** Acid nonhousehold metal cleaners (liquid), aerosol paint concentrates, architectural coatings, auto, other transportation, and machinery refinishing paints incl primers, automobile body polish and cleaners, ground/traffic marking coatings, household hard surface cleaners, industrial particleboard (furniture, fixtures, cabinets, etc.), lubricating oils

### ► Air Quality Index for Clark and Floyd counties:

Percentage of days with good air quality:	77.5%
Percentage of days with moderate air quality:	22.5%
Percentage of days with unhealthy air quality for sensitive populations:	1.5%
Percentage of days with unhealthy air quality:	0

SOURCE: Scorecard.org

# POLLUTION | Health & Safety

### ► Floyd County Carbon Monoxide Emissions

RANK - FACILITY	TONS
1. Cinery Generating Station, New Albany	320
2. B L Curry & Sons	8
3. Hitachi Cable Indiana, Inc.	3

### ► Floyd County Total Environmental Releases

Total environmental releases air, surface water, underground injection and land from the toxic release inventory

RANK - FACILITY	POUNDS
1. Cinery Generating Station, New Albany	3,225,546
2. Flint Ink N.A. Corp., New Albany	82,240
3. Cameo Marble, New Albany	74,720
4. Hitachi Cable Indiana Inc., New Albany	311
5. Blue Grass Chemical, New Albany	265
6. Metalite Corp., New Albany	236
7. Spawn Mate Inc., New Albany	155

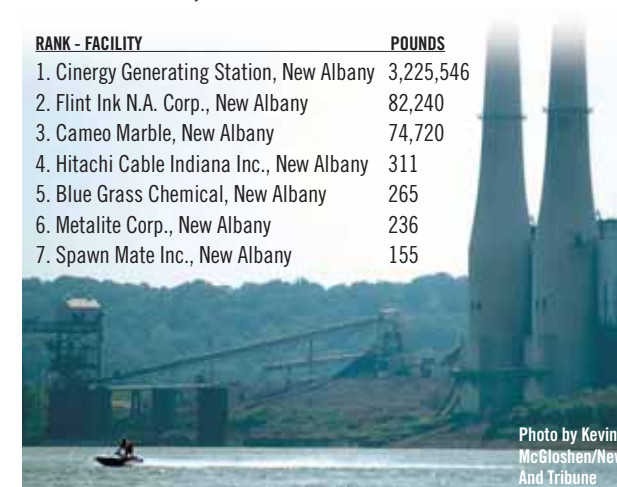


Photo by Kevin McGloshen/News And Tribune

### ► What Are the Major Pollutants in Floyd County?

Reported Environmental Releases from TRI Sources in 2002

RANK- CHEMICAL NAME	POUNDS
1. Hydrochloric Acid	2,500,000
2. Sulfuric Acid	293,005
3. Barium Compounds	154,542
4. Hydrofluoric Acid	139,000
5. Toluene	80,922

**WHAT IS HYDROCHLORIC ACID:** More hazardous than most chemicals in 7 out of 10 ranking systems. Ranked as one of the most hazardous compounds (worst 10 percent) to ecosystems and human health. This is a high volume chemical with production exceeding 1 million pounds annually in the U.S. It's used in consumer products, building materials or furnishings that contribute to indoor air pollution. Used in pesticide products.

**What kinds of consumer products may contain this chemical?** Disinfectants (nonagricultural), other polishing preparations and related products, toilet bowl cleaners.

SOURCE: Scorecard.org, Data from the U.S. Environmental Protection Agency's Toxics Release Inventory with information on the potential health hazards of toxic chemicals. The data available on Scorecard covers chemical releases in 2002. EPA released TRI data for 2003 in May 2005; it is currently being processed for incorporation into Scorecard.

### Highlander Point Shopping Center

Conveniently located in Floyds Knobs, IN  
Highway 150 E. & Old Vincennes Rd.

BANKS & FINANCIAL SERVICES	PROFESSIONAL SERVICES
Chase Bank.....923-9853	American Family Insurance.....923-9801
Edward Jones.....923-6596	BBA Tan.....923-7866
National City Bank.....948-4495	Century 21 Reisert.....923-5400
Stock Yards Bank.....923-9275	Elsby Construction.....923-2838
Your Community Bank.....923-7901	Farm Bureau.....923-9670
	Hairmasters.....923-9534
	Hello Gorgeous Salon & Spa.....923-9557
Dr. Daniel Brinegar Landmark Dental.....923-8871	Meka Leasing.....923-8179
Dr. Ronald Pryor, DMD Orthodontist.....923-9877	NuYale Cleaners.....923-9559
Dr. Phil Seng Chiropractic Healthcare.....923-7648	Shelter Insurance.....923-1900
Floyd Urgent Care Center.....923-6336	The Miracle Zone Child Care.....923-7711
Physicians Associates.....923-2273	
Physical Therapy Works.....923-0630	

RETAIL STORES	RESTAURANTS
JayC Food Store.....923-5074	China Cafe.....923-8877
Movie Gallery.....923-0600	Dairy Queen.....923-9551
Point Hardware & Rental.....923-9808	Dominos.....923-9393
Rite Aid.....923-8829	Juke Box Family Restaurant.....923-1435
The UPS Store.....923-7447	Los Indios.....923-2929
	Papa John's.....923-7911
	Sam's Food & Spirits.....923-7979
	Subway.....923-2028
	Tumbleweed.....923-6011

**FOR LEASE • HIGHLANDER POINT CENTER**  
Floyds Knobs, IN - Exit 119, I-64 - 5 Minutes from Louisville  
**RETAIL/COMMERCIAL SPACE FOR LEASE**  
8300 S.E. FREE STANDING BUILDING - Ideal for Childcare, Fitness Center, Office Complex  
750 S.E. OFFICE SPACE - WILL REMODEL TO SUIT  
1 1/4 ACRE OUTLET - WILL BUILD TO SUIT  
FOR INFORMATION CALL 923-8179

### The Accent Is On Selection

Whether you need to match wallpaper or you need a special color, our color system and our sales associates have all the tools & supplies need to make create & match color.

- Full Service Hardware & Porter Paint Store
- Rental Department with over a hundred items
- Friendly & Knowledgeable Staff

(812) 923-9808  
716 Highlander Point  
Floyd Knobs, IN

Mon-Fri 7:30am-7pm • Sat 7:30am-6pm • Sun 11am-4pm

**GO FIGURE** <sup>x10</sup> >> Despite its considerably smaller landscape compared to Clark County, Floyd County produces nearly 10 times more environmental pollution, mostly due to Cinery's generating station.